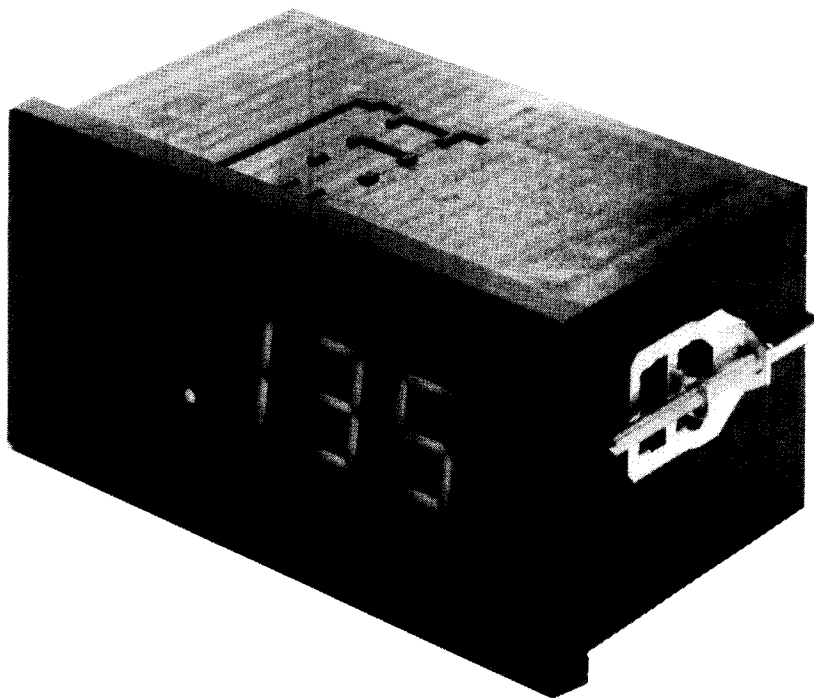


3 1/2 DIGIT DIGITAL DISPLAY

MODEL - LDD



FEATURES

- Large 1.0" High Red Display Leds
- 4 to 20 Milliamp Current Input
- 120 Vac 50 / 60 Hz Line Operation
- Jumper Selection of Current Sources (either Internal or External)
- Jumper Selection of the Location of Decimal Point
- Back Panel Adjustable Zero and Span Potentiometers
- Power and Signal Connections Via Screw Terminals

OPTIONS:

- Voltage Signal Input 0 to 2.000 Vdc
- 240 Vac 50 / 60 Hz Line Operation

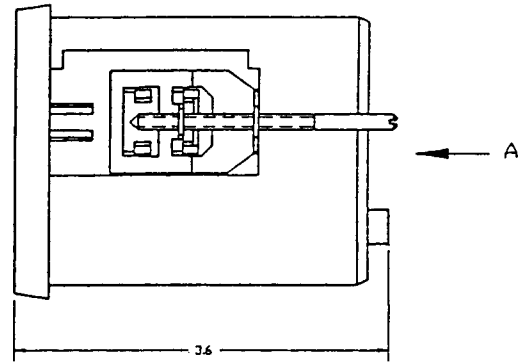
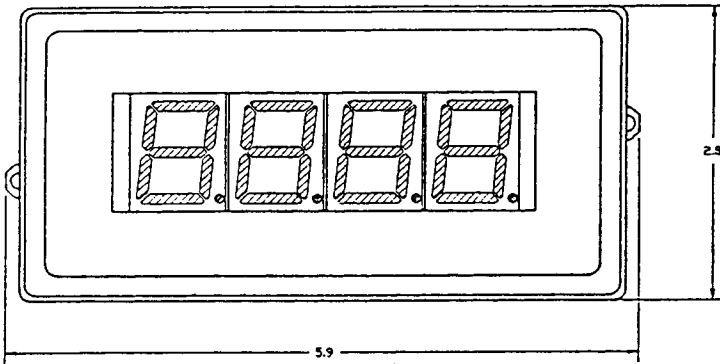
SPECIFICATIONS

POWER: 120 Vac, 50/60 Hz @ 0.1 Amp

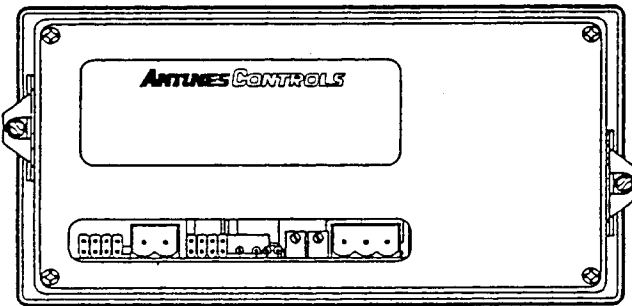
OPERATING TEMPERATURE: 0 - 60°C Degrees

PANEL CUTOUT SIZE: 5.6" W. X 2.8" H.

DIMENSIONS IN INCHES



VIEW A



NOTE:
1) DIMENSIONS ARE FOR
REFERENCE ONLY.

AA ANTUNES CONTROLS

DIVISION OF A.J. ANTUNES & CO.

180 KEHOE BLVD. • CAROL STREAM, IL 60188 USA • 1-800-253-2991

www.antunescontrols.com

TEMPERATURE CONTROLLERS • TEMPERATURE DISPLAYS • AIR PRESSURE SWITCHES • GAS SWITCHES • CUSTOM ELECTRONIC CONTROLS
• SUBSYSTEMS ENGINEERING AND MANUFACTURING • TIMERS